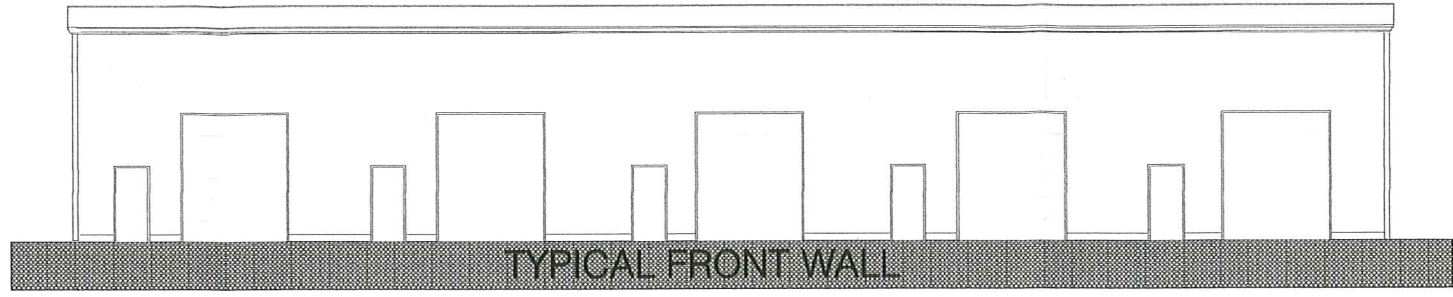
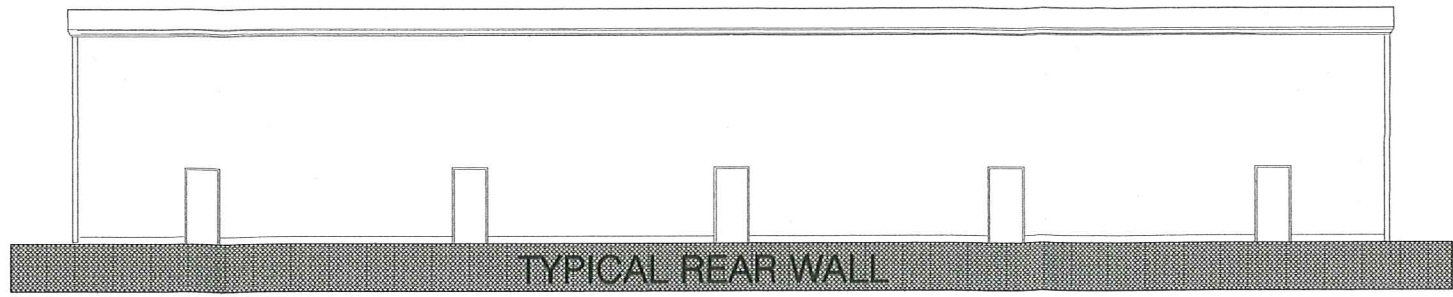
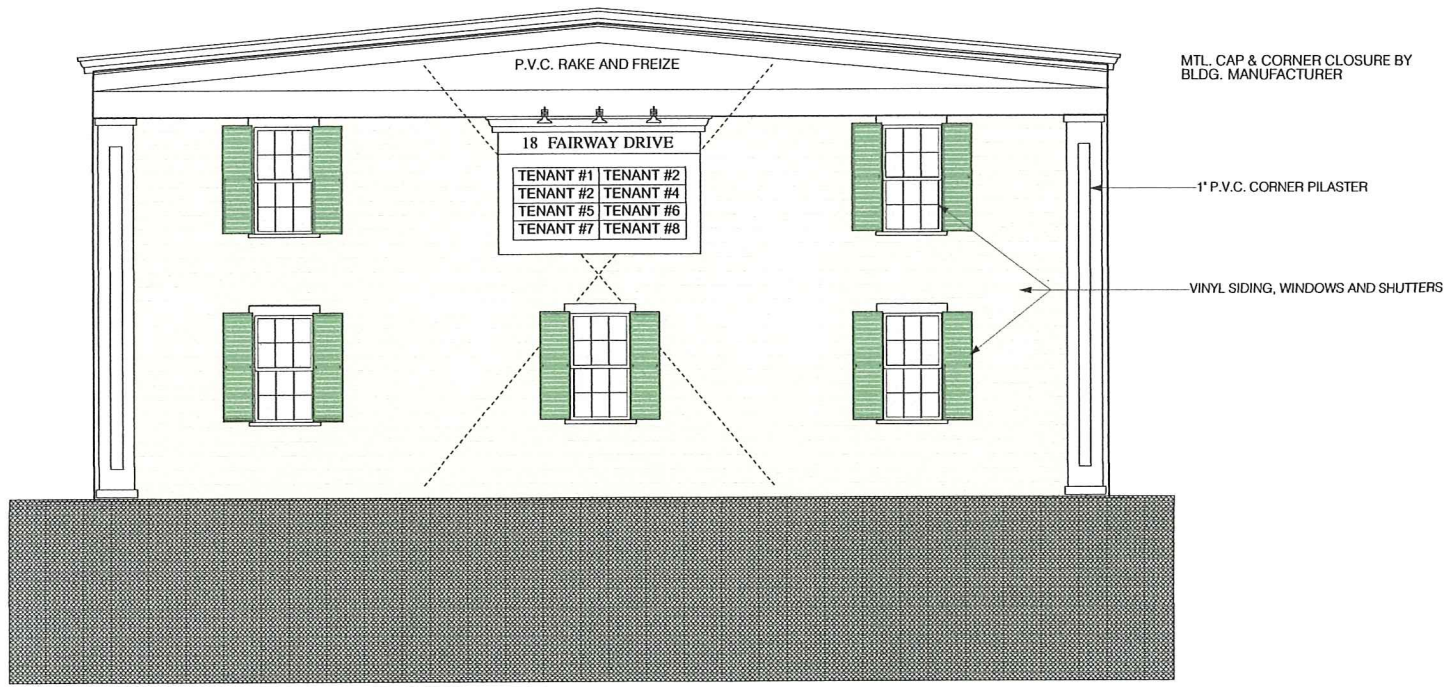
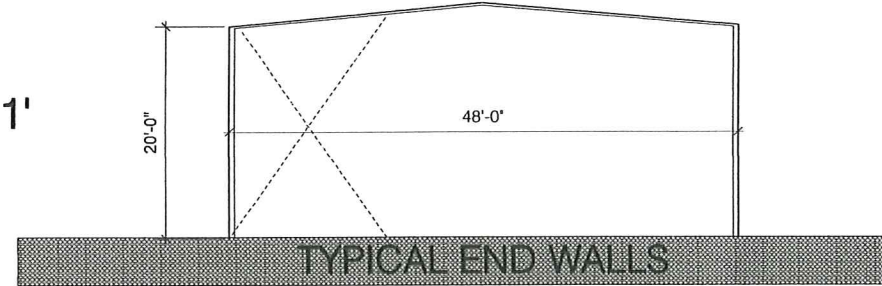


PLAN OF BUILDING #1
@ 3/32":1'
 BUILDING #2 100' X 48'

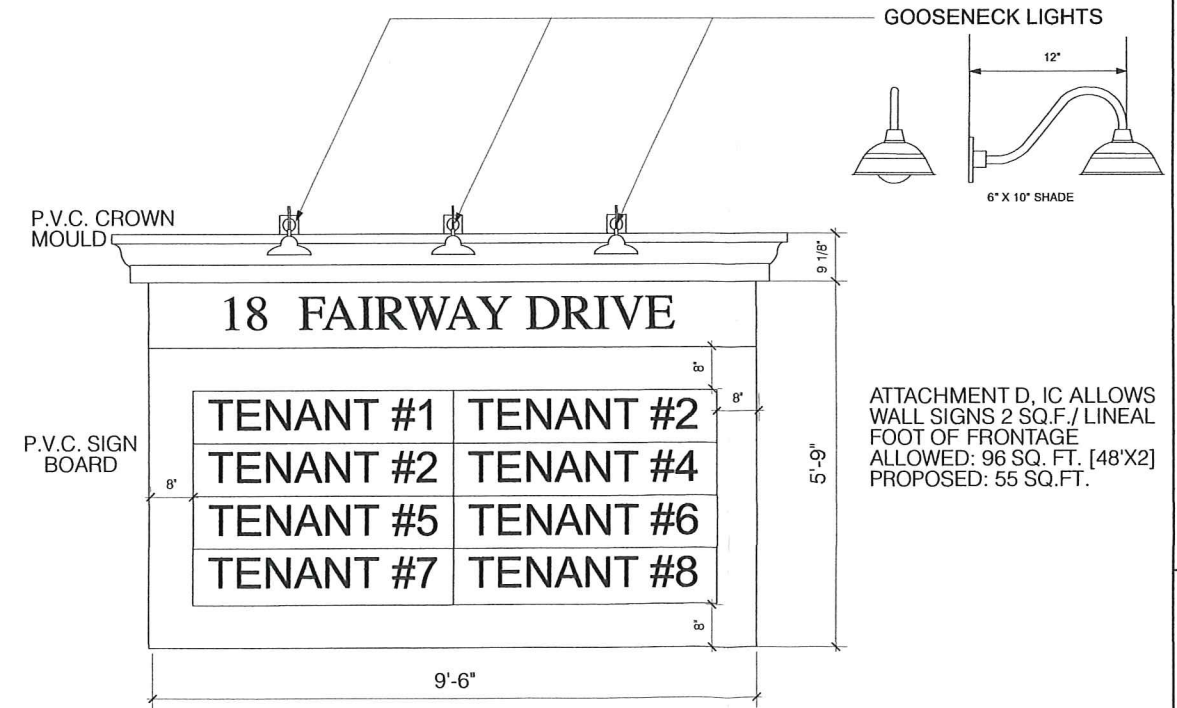
FAIRWAY DRIVE SIDE



ELEVATIONS @ 1/8":1'



FAIRWAY DRIVE ELEVATION @ 1/4":1'



PROPOSED SIGN @ 3/4":1'

Russell E. Sergeant, A.I.A.
 ARCHITECT
 3 Rowland St. Mystic CT 06355
 (860) 938-0008

DECEMBER 7, 2017

PROPOSED STORAGE BUILDING
FOR TONY MEA
18 FAIRWAY DRIVE, LEDYARD, CONNECTICUT

